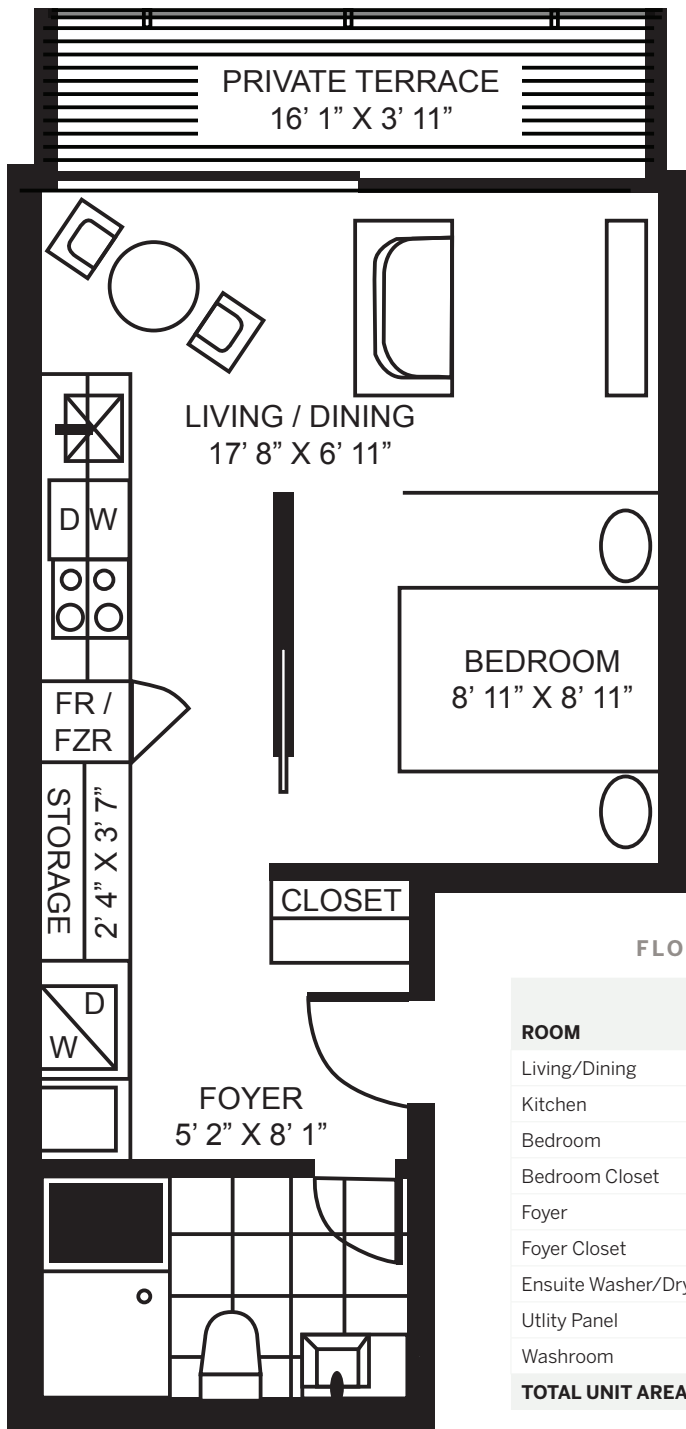


38 Stewart Street, Unit 508

376 SQ. FT. OF LIVING SPACE PLUS
63 SQ. FT PRIVATE OUTDOOR TERRACE



The essence of Toronto luxury, situated in Toronto's King West neighborhood, this freshly painted one bedroom condo features a private terrace overlooking a garden courtyard.

Looking for things to do on a night out? The unit is just steps away from Regulars, Citizen, Belfast, Laissez Faire, Escobar, and much more!

If you're in the mood for a cultural experience, TIFF Bell Lightbox, Hot Docs Canadian International Documentary Festival, and CineCycle are some of your nearby choices.

Love being outside? Look no further than St. Andrew's Playground, Clarence Square Park or Canoe Landing Park, which are minutes away from Thompson Residences.

If you are reliant on transit, don't fear, Thompson Residences has a TTC streetcar stop (King St. West at Bathurst St. East Side) just outside your door. St. Andrew Subway Station is just six blocks away.

For more information or a private showing of the unit, please contact Victoria Joly at (416) 500-1238.

FLOOR AREA MEASUREMENTS (METRIC CONVERSION)

ROOM	FEET & INCHES		METRES		AREA (m ²)	AREA (ft ²)
	WIDTH	LENGTH	WIDTH	LENGTH		
Living/Dining	17' 8"	x 6' 11"	= 5.38 m	x 2.11 m	11	122
Kitchen	5' 5"	x 10' 4"	= 1.65 m	x 3.15 m	5	56
Bedroom	8' 11"	x 8' 11"	= 2.72 m	x 2.72 m	7	80
Bedroom Closet	2' 4"	x 3' 7"	= 0.71 m	x 1.09 m	1	8
Foyer	5' 2"	x 8' 1"	= 1.56 m	x 2.46 m	4	41
Foyer Closet	2' 1"	x 3' 7"	= 0.64 m	x 1.09 m	1	7
Ensuite Washer/Dryer	2' 4"	x 2' 5"	= 0.71 m	x 0.74 m	1	6
Utility Panel	2' 4"	x 2' 5"	= 0.71 m	x 0.74 m	1	6
Washroom	9' 11"	x 5' 1"	= 3.02 m	x 1.54 m	5	50
TOTAL UNIT AREAS					35	376
Balcony	16' 1"	x 3' 11"	= 4.90 m	x 1.19 m	6	63
TOTAL UNIT INCLUDING BALCONY					41	439