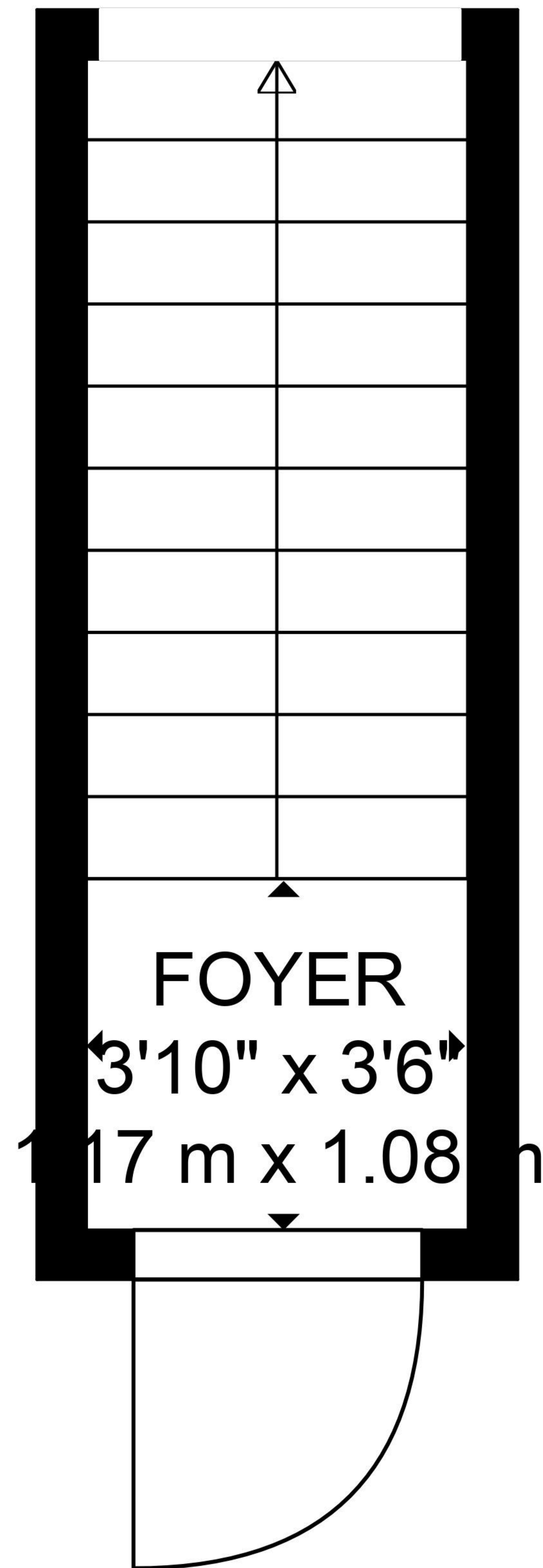
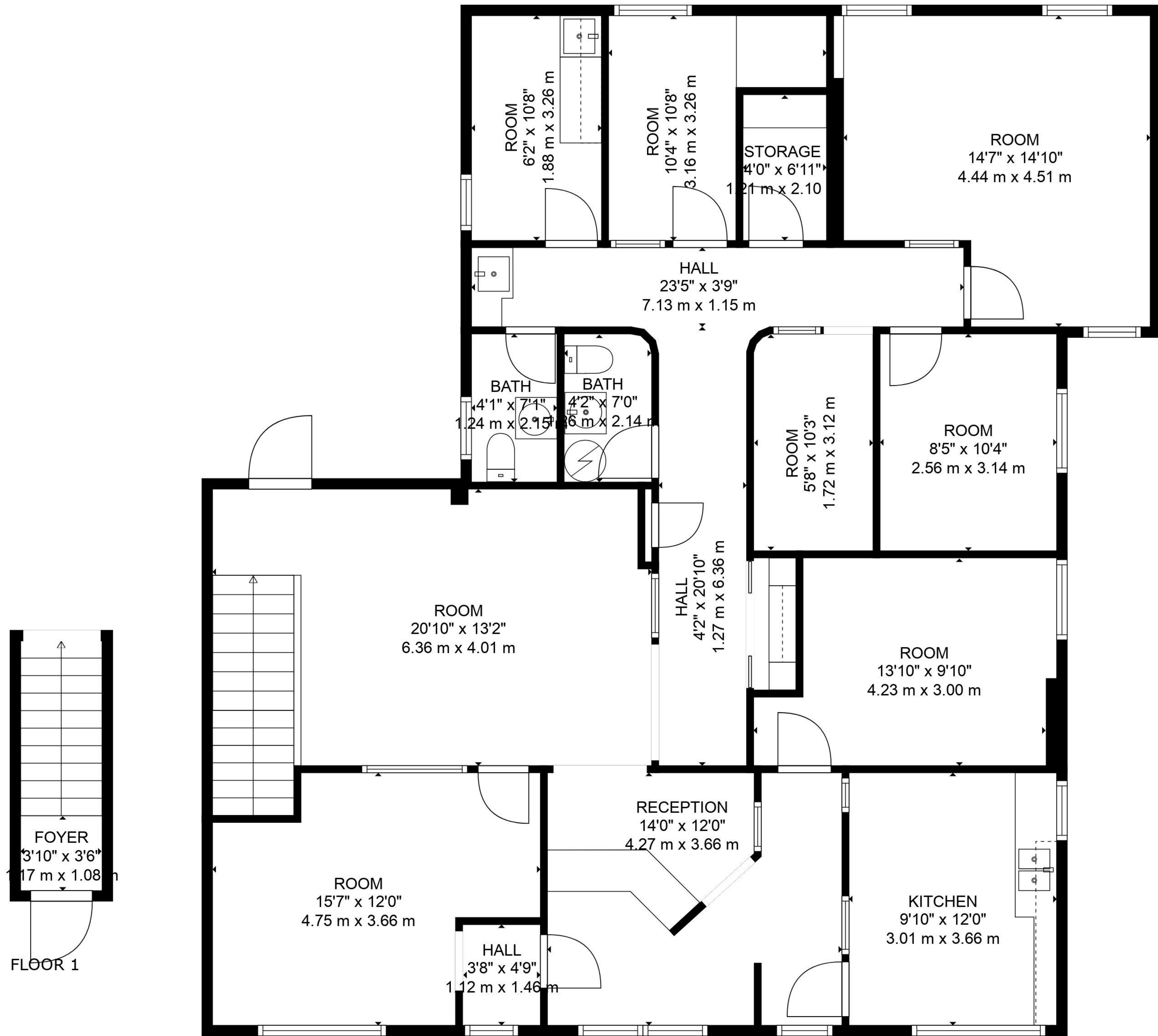


TOTAL: 4431 sq. ft, 412 m2
FLOOR 1: 4431 sq. ft, 412 m2
EXCLUDED AREAS: STORAGE: 203 sq. ft, 19 m2




TOTAL: 1734 sq. ft, 161 m2
BELOW GROUND: 46 sq. ft, 4 m2, FLOOR 2: 1688 sq. ft, 157 m2
EXCLUDED AREAS: STORAGE: 28 sq. ft, 3 m2



FLOOR 2

TOTAL: 1734 sq. ft, 161 m2
BELOW GROUND: 46 sq. ft, 4 m2, FLOOR 2: 1688 sq. ft, 157 m2
EXCLUDED AREAS: STORAGE: 28 sq. ft, 3 m2

Gross Leaseable		
Area	Area	Aggregate %
2nd Floor	1,882.63	19.24%
Outdoor Patio	277.78	2.84%
Total 2nd Floor	2,160.41	22.08%
Main	5,391.83	55.11%
Basement	2,230.80	22.80%
Total Building	9,783.04	100.00%
Net Leaseable	7,274.46	74.36%
(Excludes 2nd Floor Patio and Basement)		

Client: 1591732 ONTARIO LTD. 1591732 ONTARIO LTD.	3603-3605 Lake Shore Boulevard West Toronto, Ontario, Canada			Notes	Disclaimer This work product has been prepared by Extreme Measures Inc. pursuant to a contract with the Client for the sole benefit of and use by the Client. No third party may rely on this work product without the receipt of a reliance letter from Extreme Measures Inc.	 T 416.323.2858 / 1.877.963.2787 E mail@xmeasures.com W www.xmeasures.com
	ANSI/BOMA Z65.5-2020	Version 1A	Apr 21, 2022			

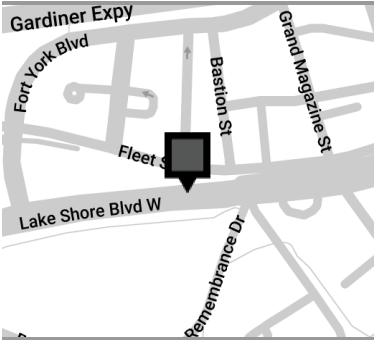
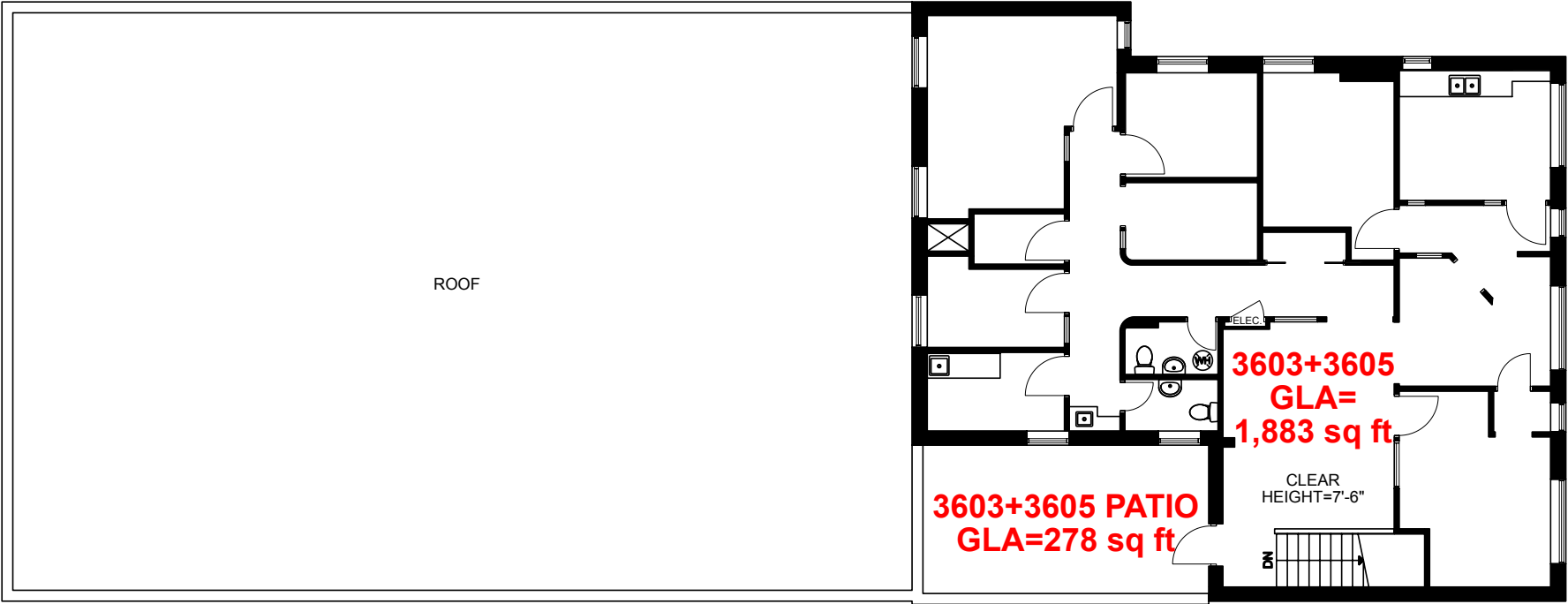
FLOOR LEVEL	BOUNDARY AREA	PARKING AREAS	MAJOR VERTICAL PENETRATIONS	SERVICE AND PUBLIC AREAS	SPACE ID	GROSS LEASABLE AREAS	INTER-BUILDING AREAS	PROPORTIONATE SHARE OF INTER-BUILDING AREAS	INTER-BUILDING LOAD FACTOR	AGGREGATE PERCENTAGE OF RETAIL PROPERTY
Basement <i>fp1</i>					Unit 3603+3605	2,230.80		27.51	1.23%	22.80%
Floor Total	2,230.80	0	0	0		2,230.80	0	27.51		22.80%
Floor 01 <i>fp1</i>				111.51	Service and Public Areas		111.51			
					Unit 3603+3605	5,391.83		66.50	1.23%	55.11%
Floor Total	5,503.34	0	0	111.51		5,391.83	111.51	66.50		55.11%
Floor 02 <i>fp1</i>			9.15		Major Vertical Penetrations		9.15			
					Unit 3603+3605	1,882.63		23.22	1.23%	19.24%
					Unit 3603+3605 Patio	277.78		3.43	1.23%	2.84%
Floor Total	2,169.56	0	9.15	0		2,160.41	9.15	26.65		22.08%
Building Total	9,903.70	0	9.15	111.51		9,783.04	120.66	120.66		100.00%

1591732 ONTARIO LTD.

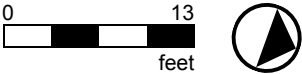
Version	Created: 04/21/2022
FP1A	Measured: 03/16/2022

3603-3605 Lake Shore
Boulevard West
Toronto, Ontario, Canada

Floor 02



This work product has been prepared by Extreme Measures Inc. pursuant to a contract with the Client for the sole benefit of and use by the Client. No third party may rely on this work product without the receipt of a reliance letter from Extreme Measures Inc.

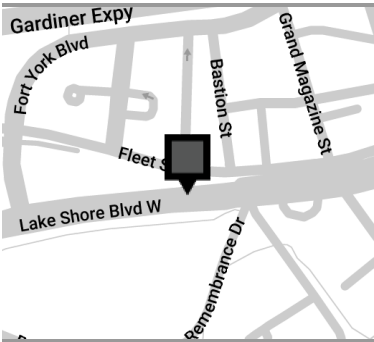


1591732 ONTARIO LTD.

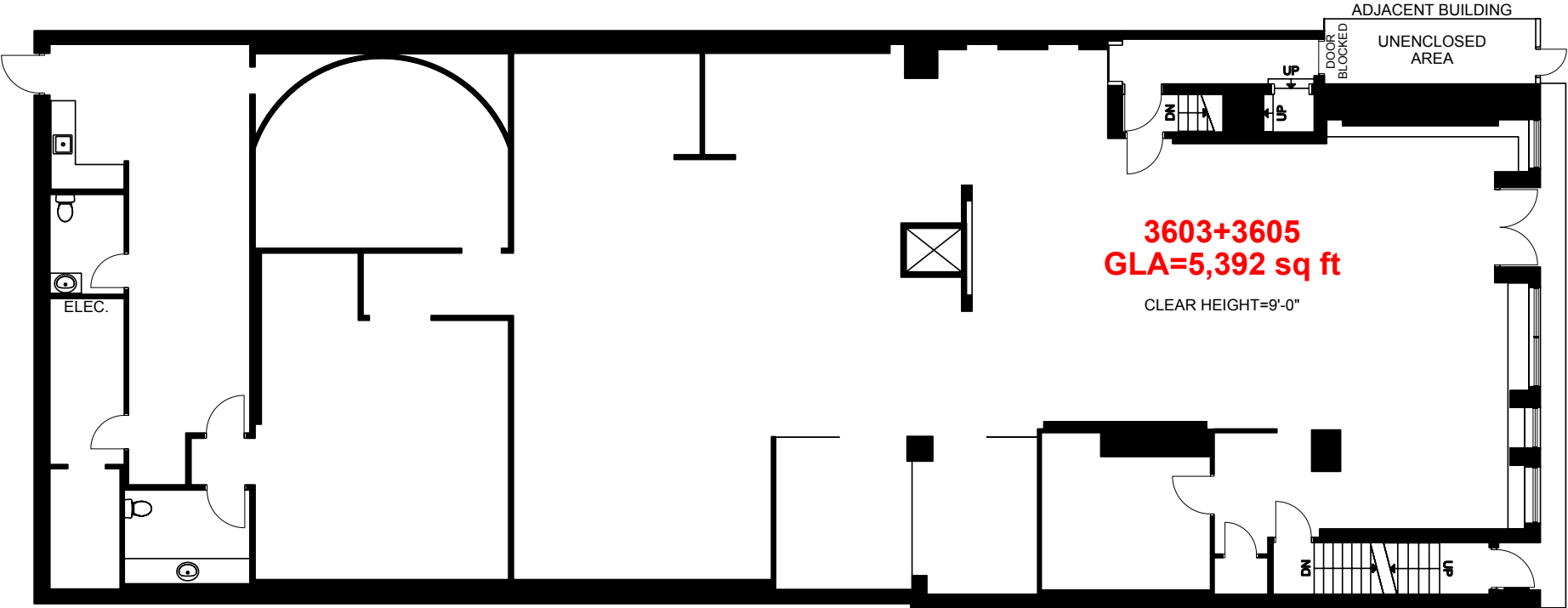
Version	Created: 04/21/2022
FP1A	Measured: 03/16/2022

3603-3605 Lake Shore
Boulevard West
Toronto, Ontario, Canada

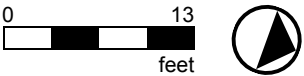
Floor 01

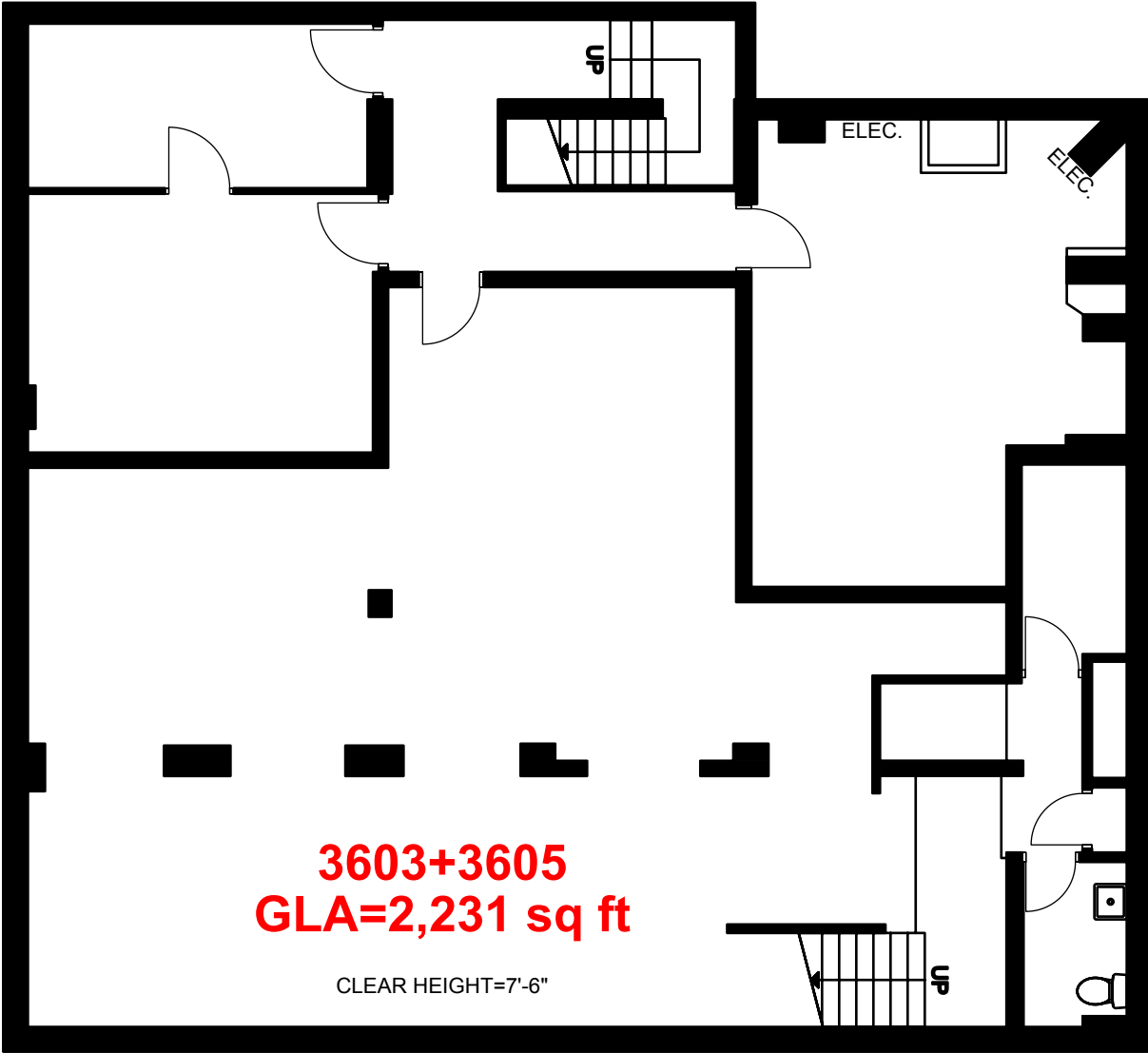


This work product has been prepared by Extreme Measures Inc. pursuant to a contract with the Client for the sole benefit of and use by the Client. No third party may rely on this work product without the receipt of a reliance letter from Extreme Measures Inc.



*NOTE: FLOOR UNDER CONSTRUCTION

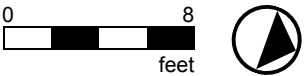




**3603+3605
GLA=2,231 sq ft**

CLEAR HEIGHT=7'-6"

*NOTE: FLOOR UNDER CONSTRUCTION

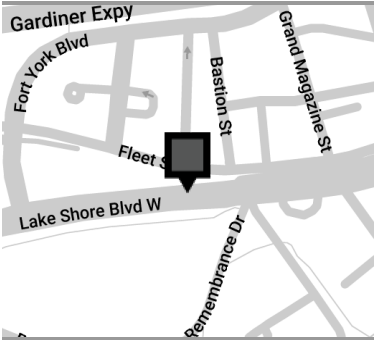


Client: 1591732 ONTARIO LTD.

1591732 ONTARIO LTD.

Version	Created: 04/21/2022
FP1A	Measured: 03/16/2022

3603-3605 Lake Shore
Boulevard West
Toronto, Ontario, Canada
Basement



This work product has been prepared by Extreme Measures Inc. pursuant to a contract with the Client for the sole benefit of and use by the Client. No third party may rely on this work product without the receipt of a reliance letter from Extreme Measures Inc.